



Spica 3

User Manual

www.golfjoy.com
support@golfjoy.com



TABLE OF CONTENTS

- I. Product Overview
- II. Components
- III. Operating Instructions
- IV. Applying Clubhead Sticker
- V. Usage Scenarios
- VI. Compatible Ball Types
- VII. Data Output Information
- VIII. Energy-Saving Features
- IX. Device Reliability
- X. Additional Notes

I. Product Overview



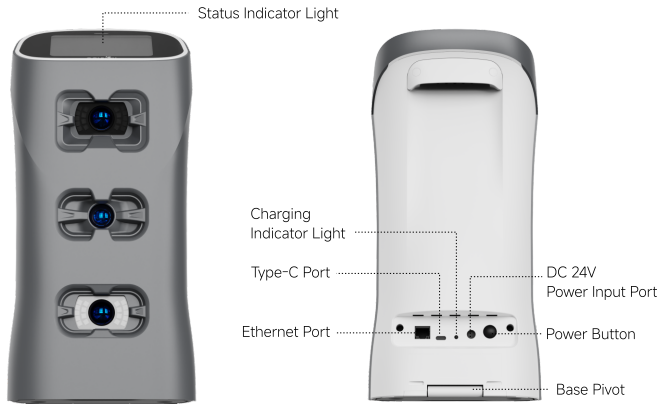
| | |
|--------------------|---|
| Color | Gray and White (Front Gray, Rear White) |
| Dimensions | L163 mm*W99 mm*H340mm /L6.42"*W3.90"*H13.39" |
| Weight | 2.85 kg |
| Material | PC (shell) + TPU |
| Battery | 12.8 Ah nominal capacity |
| Charging Time | 3 hours to reach 90%, 4.5 hours for a full charge |
| Battery Life | 6 - 7 hours |
| Connection Methods | Wi-Fi and Ethernet |

II. Components

- What's in the box:
 - Spica 3 Launch Monitor
 - Power Adapter
 - Network Cable
 - Clubhead Stickers
 - Rubber Tee
 - glasses cloth
 - brush



Key Components & Ports



■ Power Button Operation

- Power On: Press for 1 second. The device takes approximately 37 seconds to start up.
- Power Off: Press for 1 second.

■ Power Button

- DC 24V: Connect the power adapter's DC end to charge the device.

■ Ethernet Port Usage

- During Operation: Connect one end of the network cable to the launch monitor's Ethernet port and the other end to your computer.

- For Firmware Upgrades: Connect one end to the launch monitor's Ethernet port and the other end to an external network port.

■ Charging Indicator Light

- When Charging: The indicator light turns red.
- When Unplugged: The light turns off.

■ Status Indicator Light

- During Startup: Blinks blue
- After Startup: Remains steadily blue
- When a Ball Is Detected: Turns steadily green.
- During Launch Monitor Direction Calibration: Remains steadily yellow.

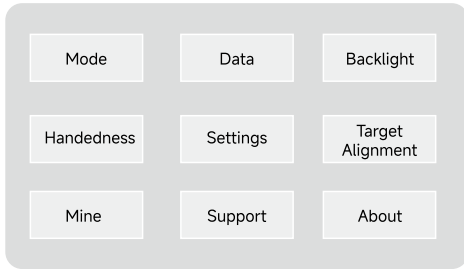
LCD Display

■ Swing Interface Display



The ball is not within the sensing area.

▪ Menu Display



- (1) Mode: Displays ball and club data (cycling between ball and club data or showing ball data only) and allows you to switch putting mode.
- (2) Data: Adjusts the position of the ball and club data display.
- (3) Backlight: Adjusts the brightness of the LCD screen.
- (4) Handedness: Switches between left-handed and right-handed modes.
- (5) Settings: Switches languages (Chinese/English), measurement units, and other options.
- (6) Target Alignment: Used with the calibration rod to position and align the launch monitor.
- (7) Mine: Scan the QR code to download the app.
- (8) Support: Provides access to device aftersales support information.

(9) About: Displays current device model number, firmware version, battery level, temperature, IP address, and more.

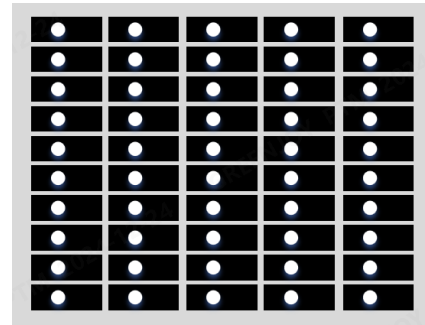
▪ Adapter (1 unit included)

- Input: 100-240 VAC, 50/60Hz, 2.5A
- Output: 24V / 0-3.75A, 90W

▪ Ethernet Cable (1 unit included)

- Cat 6a Gigabit Shielded Ethernet Cable (5 meters)

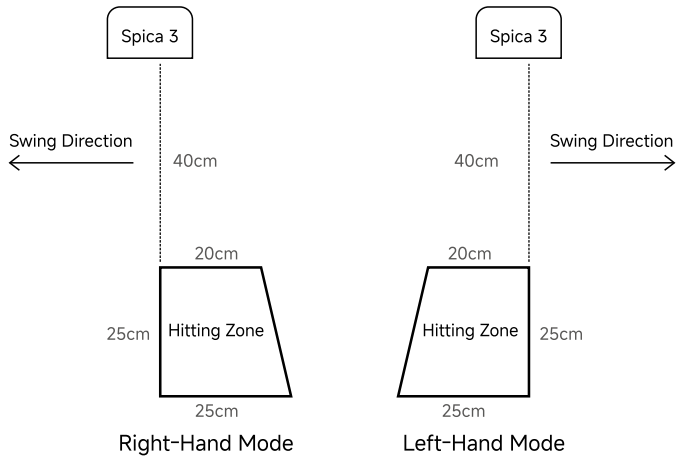
▪ Clubhead Stickers (2 sheets included)



III. Operating Instructions

- Launch Monitor Orientation Positioning:
- Handedness Selection: Tap the 'Handedness' button in the menu bar to toggle between left-handed and right-handed modes.

▪ Hitting Zone Size



▪ Calibration Method

- ① Direction Calibration: Method 1 (Suitable for Outdoor Use)



Place any golf club on the ground, pointing in the shot direction. Position the launch monitor parallel and close to the club. After alignment, remove the club.

- ② Direction Calibration: Method 2 (Suitable for Indoor Use)



Use the edge of the hitting mat (the orange edge shown in the image) as a reference. Place the launch monitor so that its bottom edge (the orange edge at the base of the launch monitor in the image) is parallel to the edge of the mat.

■ Connecting the app (5G)

App name: GOLFJOY Pro and golfjoy_space2

① STA (Router Forwarding): Connect your smartphone or tablet to your router via Wi-Fi. Then, connect the launch monitor to the same router.



② AP (Hotspot Connection): The launch monitor acts as a hotspot. Connect your smartphone or tablet directly to it via Wi-Fi.



■ Connecting the app (5G)

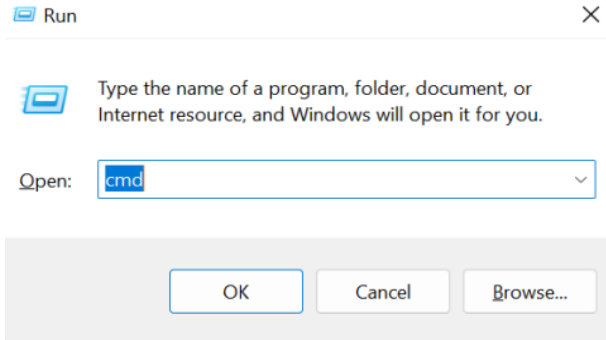


① GolfJoy Software + Spica 3

(Download GolfJoy Software Please visit www.golfjoy.com for the user manual.)

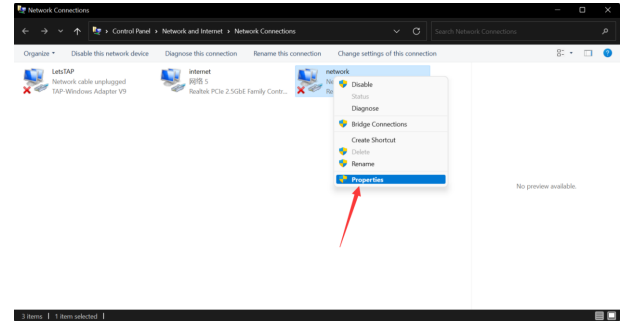


Step 1: Turn on your computer, press the "Win+R" key combination to open the "Run" dialog box. Type "ncpa.cpl" and click "OK" to access the network connections interface.

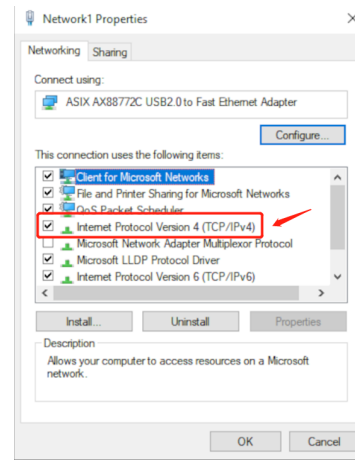


Step 2: In the network connections interface, locate the network icon.

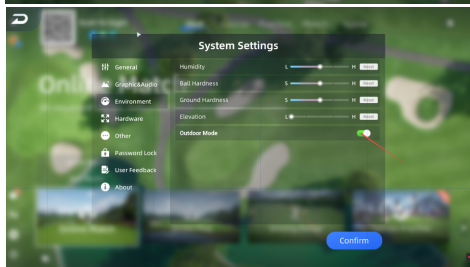
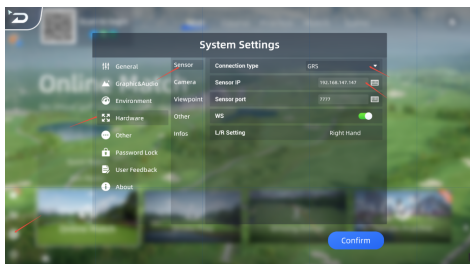
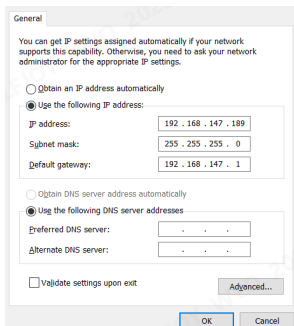
- If your computer has two Ethernet ports, one connected to the external network and the other to the launch monitor, you'll see an icon labeled "Unidentified Network." Right-click on this network icon and select "Properties" as shown in the image below.
- If your computer has only one Ethernet port, connect a Wi-Fi device to enable internet access while using the launch monitor. Right-click on the network icon and select "Properties" following the same steps.



Step 3: Double-click to select the "Internet Protocol Version 4(TCL/IPv4)".



Step 4: Set the IP address to 192.168.147.XXX (XXX should be between 2 and 255, excluding 147).



IV. Applying Clubhead Sticker



V. Usage Scenarios

- Suitable for indoor practice rooms, driving range bays, and real grass hitting bays.

VI. Compatible Ball Types

- Compatible with various marked balls and pure white balls.

VII. Data Output Information

- Provide metrics such as carry distance, ball speed, launch angle, launch direction, backspin, sidespin (spin rate, spin axis), club speed, smash factor, attack angle, and club path.

VIII. Energy-Saving Features

- Sleep mode: If no shots are taken within 2 minutes after the ball is locked, the launch monitor will enter sleep mode. The status light changes from green (locked) to blue (unlocked). Wake the launch monitor by moving or covering the ball.

IX. Device Reliability

- ① Constant Humidity and Heat: Capable of withstanding conditions of 45°C and 90% relative humidity without condensation, in accordance with GB/T 2423.3 2016.
- ② Low temperature: Operational in temperatures as low as -10°C, following the guidelines of GB/T 2423.1 2008.
- ③ Packaging Vibration: Meets the vibration resistance standards specified in GB/T 2423.56 2018.
- ④ Packaging Impact: Complies with the impact resistance criteria outlined in GB/T 2423.5.
- ⑤ Packaging Drop: Designed to endure drop tests as per the requirements of GB/T 2423.7.
- ⑥ Salt Fog Resistance: Resistant to neutral salt fog exposure, adhering to the standard set in GB/T 2423.17.
- ⑦ Dust and Water Protection: Rated IP52 for protection against dust and water ingress, in line with GB/T 4208.

X. Additional Notes

- ① Charging Environment: Ensure the charging environment temperature is below 40°C. The power adapter operates between -20°C and 40°C.
- ② Lens Maintenance: The clarity of the launch monitor lens significantly affects spin calculation. If the spin calculation results are (backspin 3500 rpm, sidespin 0 rpm), it indicates a calculation failure for this club. If multiple clubs show calculation failures, inspect the lens for focus issues, obstructions, or dirty.



Follow us on our social media

GOLFJOY Ltd.



support@golfjoy.com



www.golfjoy.com



9995 Muirlands Blvd,
Irvine, CA, United States