

MANUFACTURERS & DESIGNERS OF GOLF DRIVING RANGE EQUIPMENT & ACCESSORIES SINCE 1980

P² PRO Washer



P² GOLF PRODUCTS

Engineered for Productivity & Performance

**Operational &
Repair Manual**

Model:
P2PRBW



www.countryclub.com.au • 1300 138 804

TABLE OF CONTENTS

WELCOME	2
WARRANTY	2
UNPACKING	3
ASSEMBLY	4
OPERATION	5
MAINTENANCE	6
PARTS REPLACEMENT	7
TROUBLESHOOTING	8
SCHEMATIC	9
PARTS LIST	10

WELCOME

THANK YOU for choosing P² Golf! We warmly welcome you as the newest member in our driving range equipment family.

With P² Golf you can be assured that we share your same goals. We want all your range equipment to work for you, so we work extra hard to provide the best, highest quality, efficient product delivered promptly every time.

Our complete line of range equipment is made by us in our very own manufacturing facility using only high grade, heavy gauge galvanized steel. We are confident that our range equipment will outperform anything on the market today.

Our confidence is a result of being **PREPARED, PROACTIVE & POSITIVE.** This comes from who we are at our core - good people with high integrity and character. These values have always been the pillars to our success since 1950 and it's what we promise to deliver to you, our customer every time.

WARRANTY

ALL P² PRODUCTS ARE WARRANTED TO BE FREE FROM DEFECTS IN MATERIALS AND WORKMANSHIP **ONE YEAR FROM DATE OF PURCHASE** AND SUBJECT TO LIMITATIONS & GUIDELINES LIST BELOW:

THE WARRANTY DOES NOT COVER NORMAL WEAR AND TEAR, ABUSE, OVERLOADING ALTERATIONS, IMPROPER FLUIDS OR USE IN A MANNER THAT EQUIPMENT WAS NOT INTENDED.

THE WARRANTY DOES NOT COVER MALFUNCTION OR DAMAGE DUE TO OPERATION NOT IN COMPLIANCE WITH THE OPERATION INSTRUCTIONS IN THIS MANUAL. WARRANTY DOES NOT COVER NEGLIGENCE DUE TO NOT PERFORMING PERIODIC INSPECTIONS & MAINTENANCE. THESE PROCEDURES ARE NECESSARY TO DISCOVER ANY INDICATION OF MALFUNCTION OR FAILURE AND MAINTAIN PEAK PERFORMANCE. PLEASE REFER TO MAINTENANCE SECTION OF THIS MANUAL FOR GUIDELINES ON INSPECTION INTERVALS & PROCEDURES.

IF YOU BELIEVE A PRODUCT IS DEFECTIVE PLEASE CONTACT US IMMEDIATELY SO THE APPROPRIATE ACTION CAN BE TAKEN.

UNPACKING & INSPECTION

All P² WASHERS are packed complete with all components and parts. Before assembly check that all parts are accounted for. Contact us at 1300 138 804 immediately if anything is missing.

P² PRO Washer contains:

At the time of unpacking please examine the shipment for loss or damage. Inspect all components for visible damage. If any damage or loss is discovered, take pictures and report it to us at 1300 138 804 so we can take the appropriate action

ASSEMBLY & INSTALLATION

All P² WASHERS are packed complete with all components and parts. Before assembly check that all parts are accounted for. Contact us at 1300 138 804 immediately if anything is missing.

Tools & Supplies needed: PVC tubing & Hose Clamps

Assemble WASHER:

1. Start with PALLET - remove all wrap and packaging.
2. PLACE Washer on LEVEL ground, concrete is preferable.
3. POSITION Washer in sheltered or roofed location with adequate clearance on all sides and overhead for loading balls into hopper.
4. BOLTING the unit to the floor is OPTIONAL.

Install DISPENSER FEEDING TUBE: (Not Included)

1. CUT 2" ABS or 2" FLEXIBE PVC TUBING to desired lengths.
 2. SLIDE tubing onto LOADER TRACK using supplied 2" coupler and secure with hose clamp.
 3. POSITION tube output over open dispenser top.
- * Note plumb tubing to a height of 10' or less

Connect WASHER:

1. CONNECT plug from motor to the HOPPER section of WASHER
2. CONNECT electric CORD to power supply, ensure the cord is clear from potential pinch points and water.

Your P² Washer is now completely assembled and ready for use.

OPERATION & USE

Each range is unique so washing frequency will be specific and different for every range. For increased operational reliability and service life, we recommend the following general guidelines for the best use:

Only wash golf balls in the P² Pro Washer.

Before use, evaluate picked golf balls for debris like sticks, rocks, broken tees and balls. Remove before cleaning cycle. Doing so will keep the machine washing properly. Excessive debris can cause damage to machine and void warranty.

Fill the tub to the indicated fill line. A cup of borax powder or low-sudsing detergent can be added.

Always turn on the machine before feeding balls into hopper.

When feeding balls into hopper, observe and make sure balls roll smoothly through washer and exit ball chute into basket or dispenser.

PROHIBITED USE:

Never operate machine with lid open.

Do not run golf balls through cycle without water. Serious damage to balls can occur by running a dry machine.

Never use or add laundry detergents, liquid dish soaps, harsh chemicals to the machine. Only use low-suds detergents. Use of anything else can cause damage to brushes, golf balls and machine.

Do not overload washer with more balls than capacity limits:

P² PRO Washer Hopper Capacity: 1,200 balls.

Modifying with components or parts not intended for the P² PRO Washer. Always use P² replacement parts that are intended for P² Washers and approved by us.

MAINTENANCE

All P² Washers are designed to provide many years of reliable operation. However, it is recommended to follow a regular inspection and maintenance schedule to discover any malfunctions early to prevent breakdowns. This will ensure optimum ball washing and a long service life.

ALWAYS TURN MACHINE OFF AND DISCONNECT FROM POWER SUPPLY WHEN WORKING ON MACHINE TO AVOID ELECTRICAL SHOCK AND PERSONAL INJURY. NEVER INSERT HAND IN MACHINE WHILE ON! WASHING DOWN EXTERIOR OF MOTOR VOIDS ALL MOTOR RELATED WARRANTY!

Below is a recommended maintenance schedule:

DAILY:

Check cords for frays or deteriorations.

Drain water at the end of each day and when exceptionally dirty. Hose down the inside of the machine to clear excessive dirt and debris.

Remove objects that became lodged in brush during washing cycles. For example, broken golf balls, tees, rocks, sticks, etc.

MONTHLY:

Remove chair guard, inspect chair tension and grease as necessary. If chain is too stretched it may need replacing.

Inspect brush and loader wheel for excessive wear. Call us at 1300 138 804 or visit us online to order replacements then follow Replacement Procedure on page 8.

SEASONAL STORAGE:

Thoroughly wash, clean and dry washer. Lubricate all nuts, bolts, chains and gears. Replace any that are rusted or damaged. Store undercover or sheltered to protect from extreme weather & climate conditions.

PART REPLACEMENT PROCEDURE

P² WASHER REPLACEMENT PARTS are available on our online store at www.p2golfproducts.com or contact us at 1300 138 804 for quick shipment.

Tools needed: 1/2" Wrench or Socket

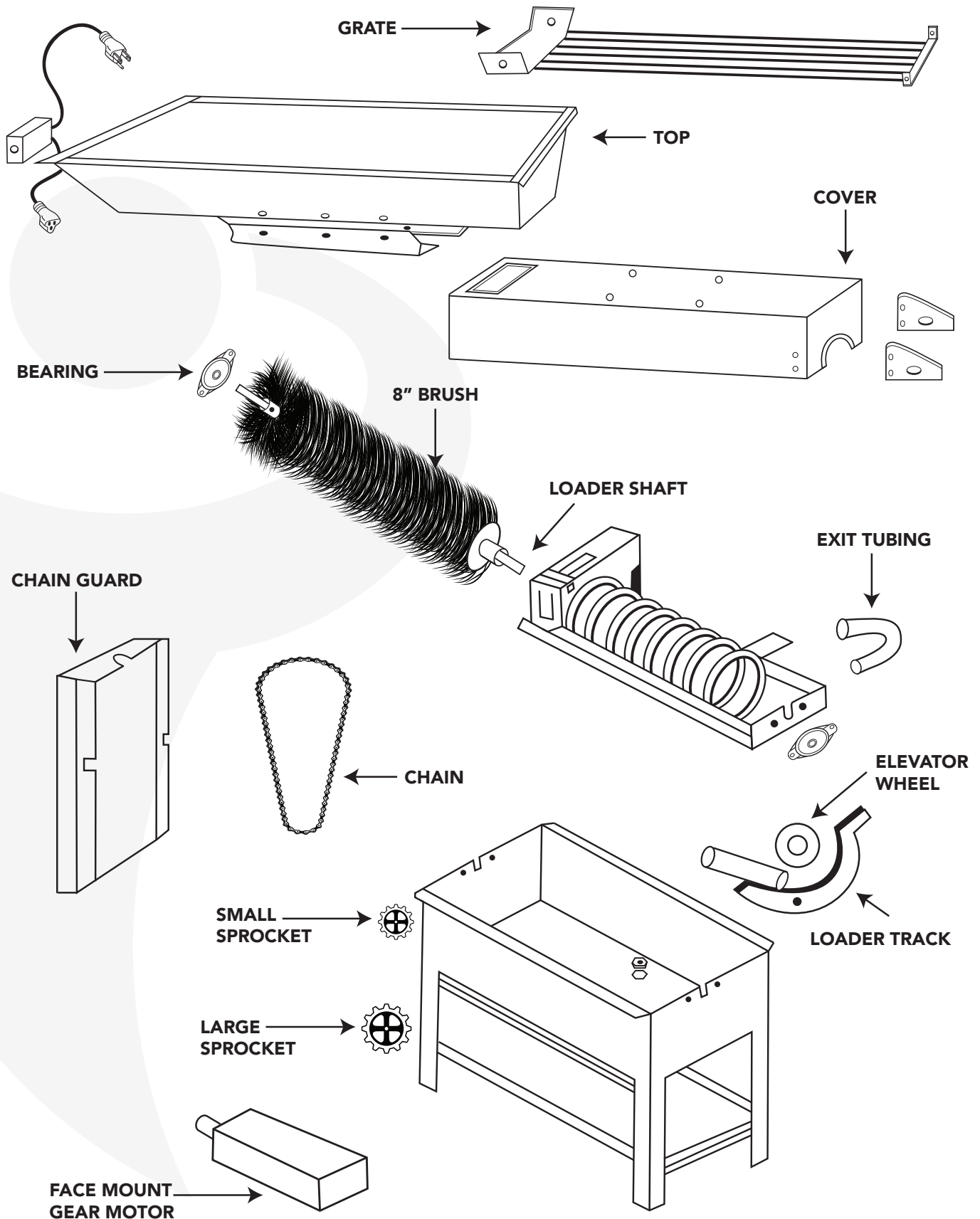
1. Start by REMOVING top assembly, to expose tank.
2. REMOVE CHAIN COVER to expose SPROCKETS AND CHAIN.
3. REMOVE CHAIN and UPPER SPROCKET from SHAFT.
4. REMOVE SHAFT BEARINGS from each end of SPIRAL.
5. REMOVE two CARRIAGE BOLTS from SPIRAL and REMOVE SPIRAL end.
6. PULL out BRUSH and SHAFT ASSEMBLY.
7. INSTALL NEW BRUSH and SHAFT ASSEMBLY. If replacing only brush, remove screws from brush end and slide brush from shaft. Slide new brush onto shaft and install new screws that were supplied with brush replacement.
8. REINSTALL BRUSH into SPIRAL and POSITION SPIRAL back into tank assembly.
9. REPLACE SHAFT BEARINGS on each end of SPIRAL.
10. REPLACE SPROCKET on SHAFT and INSTALL CHAIN. ADJUST CHAIN TENSION and TIGHTEN FOUR 1/4" BOLTS using a 7/16" SOCKET.
11. REPLACE CHAIN GUARD.
12. REINSTALL top ASSEMBLY.

TROUBLESHOOTING

P² Washers are one of the most reliable and effective models of ball washers currently on the market. However, occasionally there may be a malfunction. These are caused for different reasons. Below is a list of the most common and our recommended solutions:

PROBLEM	REASON	SOLUTION
Washer won't turn ON	Power outage or circuit tripped Power cord unplugged Faulty toggle switch Water in motor	Check circuit breaker Plug cord into power supply Replace toggle switch Replace motor
NO Balls Exiting	Feeder track blocked Spiral track blocked Brush worn out Loader wheel worn out	Check washer exit and spiral and clear debris Ensure spiral track is properly aligned to exit Replace brush Replace loader wheel
Balls NOT Clean	Dirty water Worn out brush	Change water Replace brush
CHEWED up Balls	Object and debris lodged in brush No water in tank	Check & remove objects lodged in brush and spiral Fill tank with water to proper depth
Balls DROPPING to Bottom of Tank	Spiral misaligned or worn out	Replace brush and/or spiral Ensure spiral is aligned properly to exit tract/feeder tube
SQUEAKING or SQUEALING Noises	Chain too tight Bearings are worn out	Adjust chain tension Replace bearing and grease gears Motor may need replacing
GETTING SHOCKED	Ground wire loose	Remove power, open electrical box on ball tray and secure ground wire.

P² PRO WASHER OPERATIONAL & REPAIR MANUAL





6 Gateway Drive, Carrum Downs, Victoria, 3201
1300 138 804

